

SF 105

OVERVIEW

Our most most popular and versatile profile is designed to be used single or double-sided, depending on the application. It has a recessed groove on the perimeter for tool-free installation of the SEG banner making assembly quick and simple. The end result is an upscale frameless look that displays the graphic from edge to edge.

APPLICATIONS

This frame is most commonly used in retail applications. Its deep profile makes it very versatile. It can be wall-mounted, freestanding or used as a table-top display.



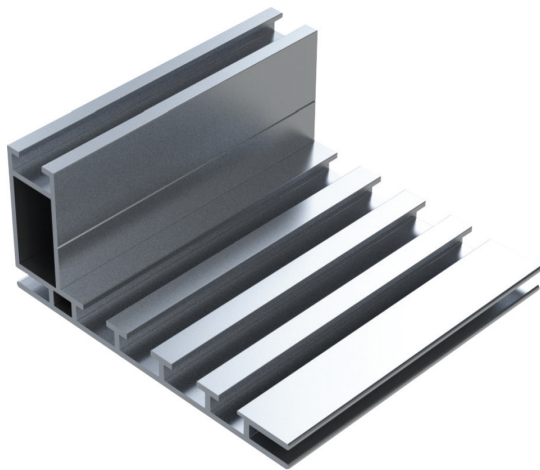
Anodized



White



Black

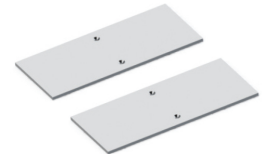


WEIGHT

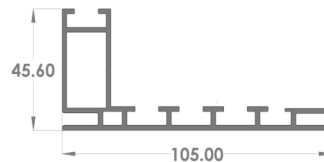
1.01 Lb/ft 1.51 kg/m



ACCESORIES
Mounting Bracket



ACCESORIES
Freestanding Base



PROFILE DIMENSIONS



LOCK-SYSTEM
Tension-Lock

SINGLE / DOUBLE-SIDED FRAME SILICON EDGE GRAPHIC