

SF 076

OVERVIEW

This profile creates a medium depth single-sided frame. It has a recessed groove around the perimeter, designed to easily install an SEG banner. The end result is an upscale frameless look that displays the graphic from edge to edge. This solution allows the SEG banner to be installed and replaced easily without the use of any tools, making assembly simple and quick.

APPLICATIONS

This frame is ideal for retail visual displays. Its medium profile gives the structure a more robust industrial look. Perfect for medium to large wall mounted displays.



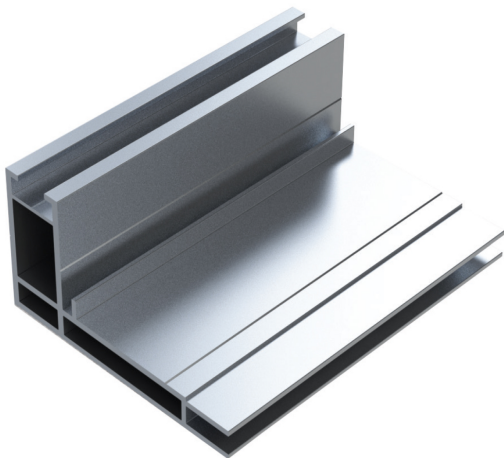
Anodized



White



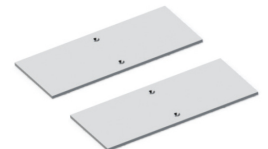
Black



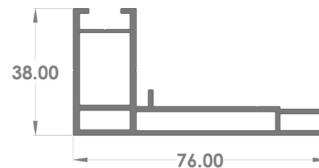
WEIGHT
0.77 Lb/ft 1.15 kg/m



ACCESSORIES
Mounting Bracket



ACCESSORIES
Freestanding Base



PROFILE DIMENSIONS



LOCK-SYSTEM
Tension-Lock

SINGLE-SIDED FRAME SILICON EDGE GRAPHIC