

SFD 075

GO BIG!
DESIGNED FOR LARGE
FORMAT SIGNAGE

OVERVIEW

This profile creates a sleek double-sided frame. It has a recessed groove around the perimeter, designed to easily install an SEG banner. The end result is an upscale frameless look that displays the graphic from edge to edge. This solution allows the SEG banner to be replaced easily without the use of any tools, making assembly simple and quick.

APPLICATIONS

This frame is the go-to for architects and interior designers that want to add a modern look to their projects. Ideal in corporate offices, as well as retail applications. The sleek finish adds an upscale look to any environment.



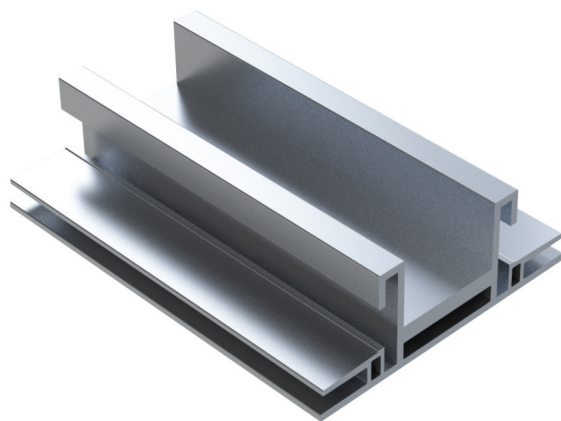
Anodized



White



Black



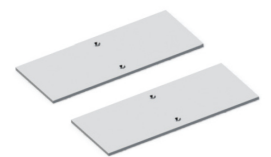
WEIGHT

0.86 Lb/ft 1.28 kg/m



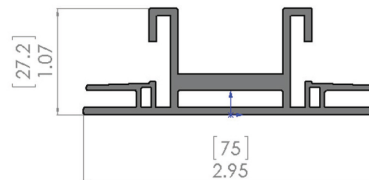
ACCESSORIES

Hanging Attachment



ACCESSORIES

Freestanding Base



PROFILE DIMENSIONS



LOCK-SYSTEM

Angled L

DOUBLE-SIDED FRAME SILICON EDGE GRAPHIC