

SFD 150

OVERVIEW

This profile creates a deep double-sided frame. It has a recessed groove on the perimeter for tool-free installation of the SEG banner making assembly quick and simple. The end result is an upscale frameless look that displays the graphic from edge to edge.

APPLICATIONS

This frame is most commonly used in restaurant applications as well as grocery and supermarket signage. Its deep profile makes it very versatile. It can be used freestanding or hanging.



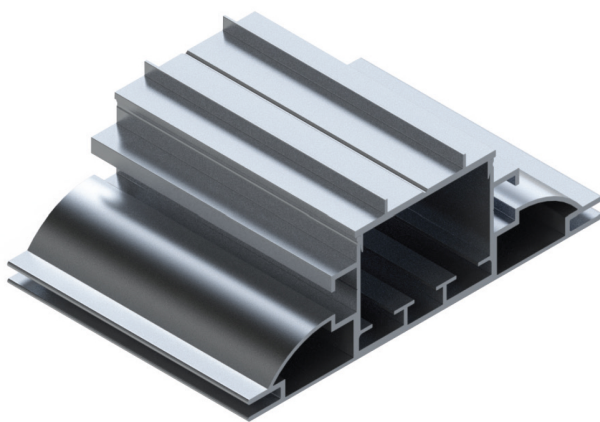
Anodized



White



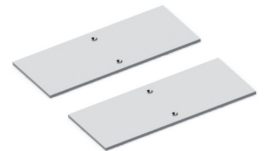
Black



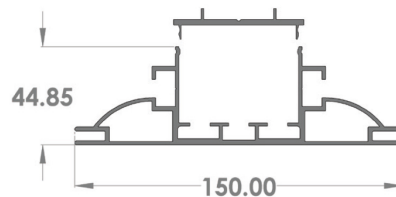
WEIGHT
1.29 Lb/ft 1.92 kg/m



ACCESORIES
Hanging Attachment



ACCESORIES
Freestanding Base



PROFILE DIMENSIONS



LOCK-SYSTEM
Double L

DOUBLE-SIDED FRAME SILICON EDGE GRAPHIC