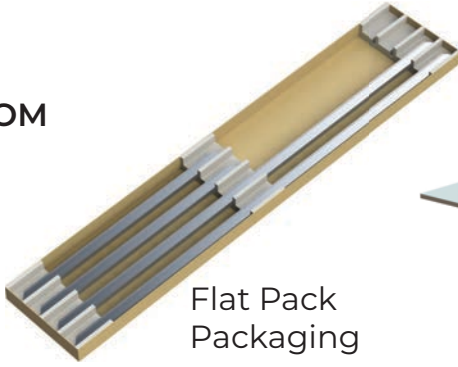




### BOM



Flat Pack Packaging



Standard L Bracket x4



Set Screw x16



Allen Key 3mm



Flat Fitting (if applicable)

### STEP 1

Place the frame lengths flat on a clean surface, matching the corners as per **Image A**.



### STEP 2

Insert the L Brackets into the profile channel for each corner.



### STEP 3

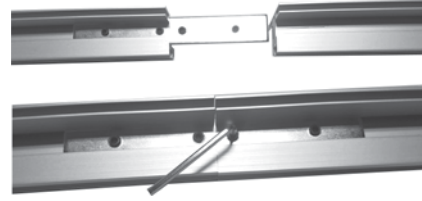
Secure each corner in place by tightening the set screws with the provided Allen key.





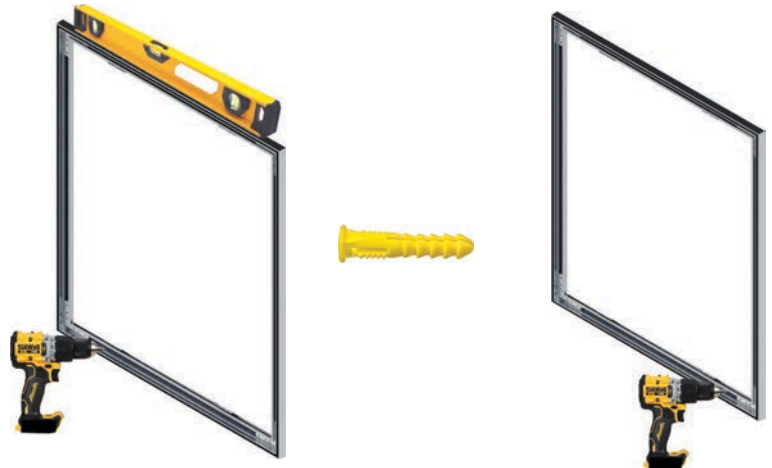
### STEP 4 (if applicable)

Place the flat fitting in the center of the profile channel between the two profile lengths. Join the profile lengths together and secure them by tightening the set screws.



### STEP 5

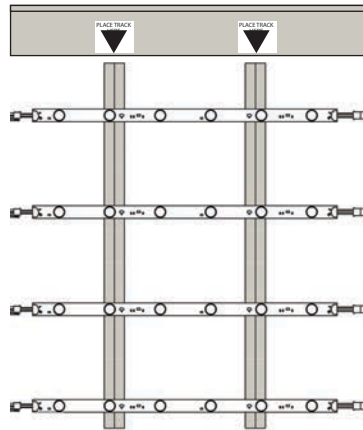
Align the frame in the desired position and ensure it is level. Drill holes through the frame and into the wall. Insert wall anchors into the drilled holes, then secure the frame to the wall using screws.





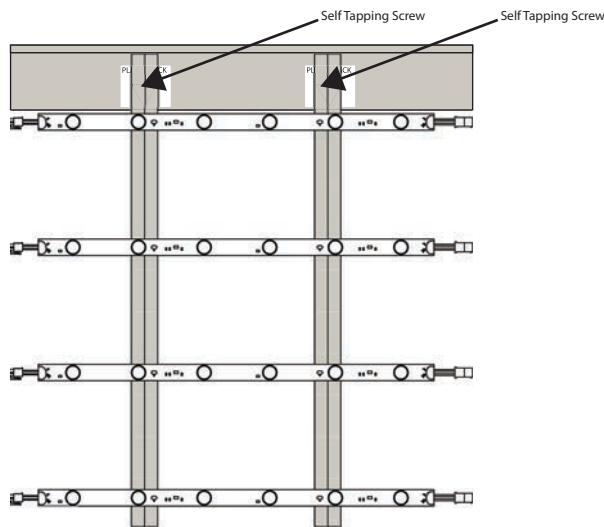
### STEP 6

Align the center of the tracks with the arrow on the printed sticker applied to the profile.



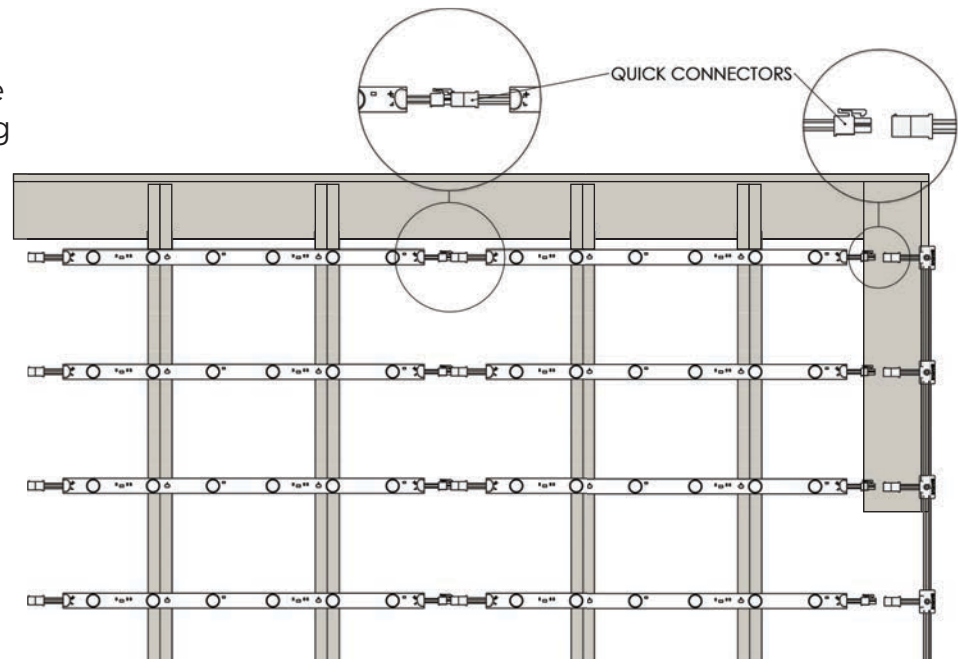
### STEP 7

Place each track on top of the frame. Use self tapping screws to affix each track to the frame. Fix tracks to intersecting crossbeams.



### STEP 8

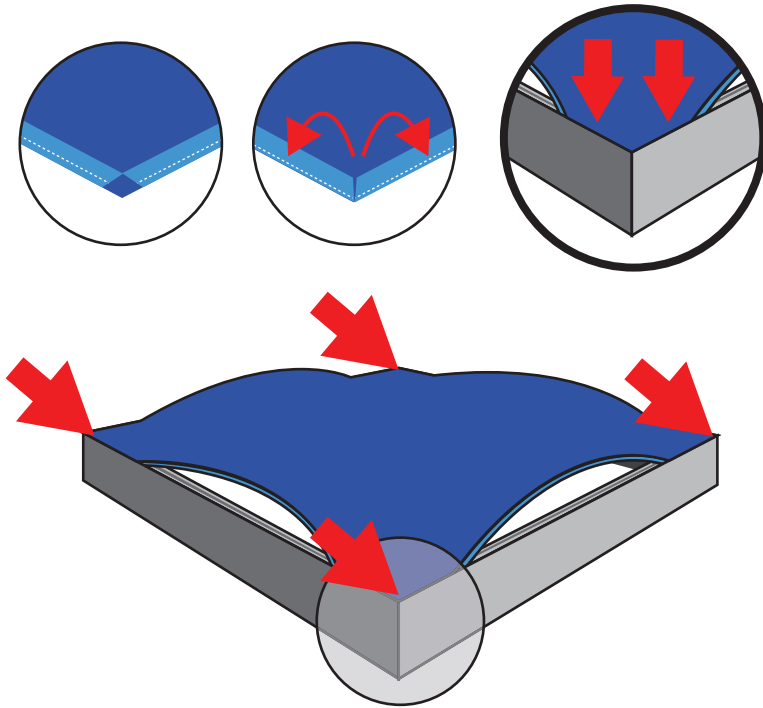
Place the cables behind the LED bars and connect using the quick connectors.





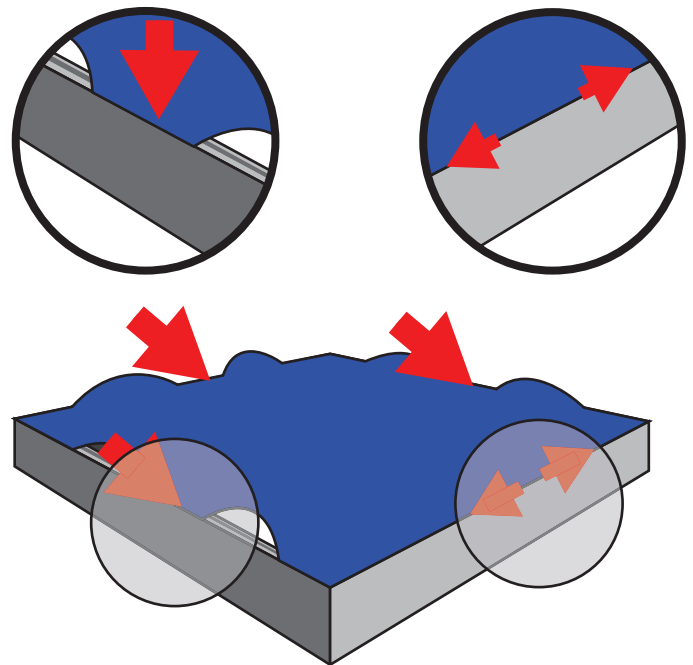
### STEP 1

Begin by folding **Corner A** of the graphic, ensuring the silicone strip faces downward with the fabric wrapped over it. Carefully insert the silicone edge into the corresponding corner of the frame. Repeat for **Corner C**, then move to **Corner B**, followed by **Corner D** to complete the installation of all corners.



### STEP 2

Insert the silicone strip at the mid-point of all four sides. Then, work outward from each mid-point toward the corresponding corners to complete the installation.



### GRAPHIC REMOVAL

Locate the pull tab and gently pull up on the tab.

