



BOM



Flat Pack Packaging



Allen Key 5mm X1



Locking System Corner Bracket X8



Flat Base (if applicable)



Washer (if applicable)



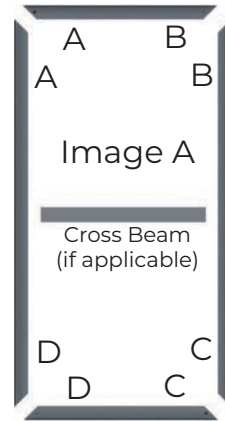
Flat Head Allen Bolt (if applicable)



Wing Nut (if applicable)

STEP 1

Place the frame lengths flat on a clean surface, matching the corners as per **Image A**.



STEP 2

Insert the Locking System Corner Bracket (2) in the first channel on each side of each corner of the frame as per **Image B**, **Image C** and **Image D**.

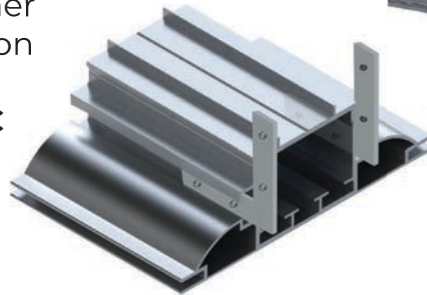


Image B



Image C

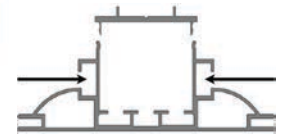


Image D

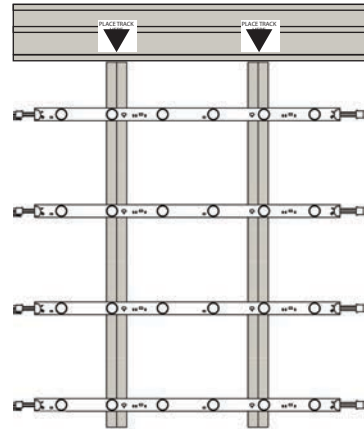
STEP 3

Secure each corner in place by tightening the set screws for the locking system with the provided Allen key.

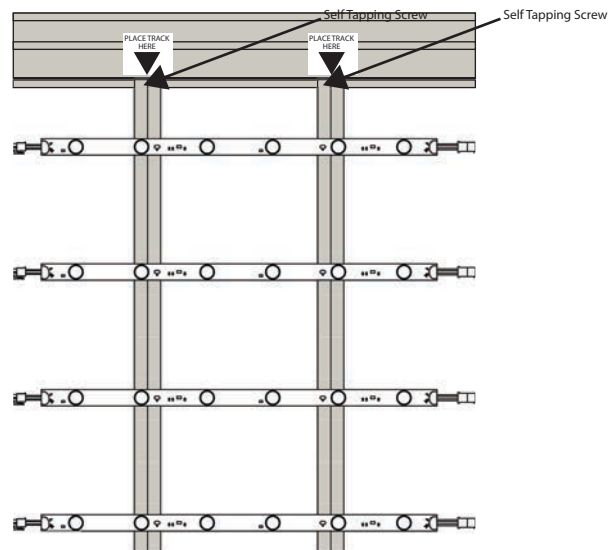


STEP 4

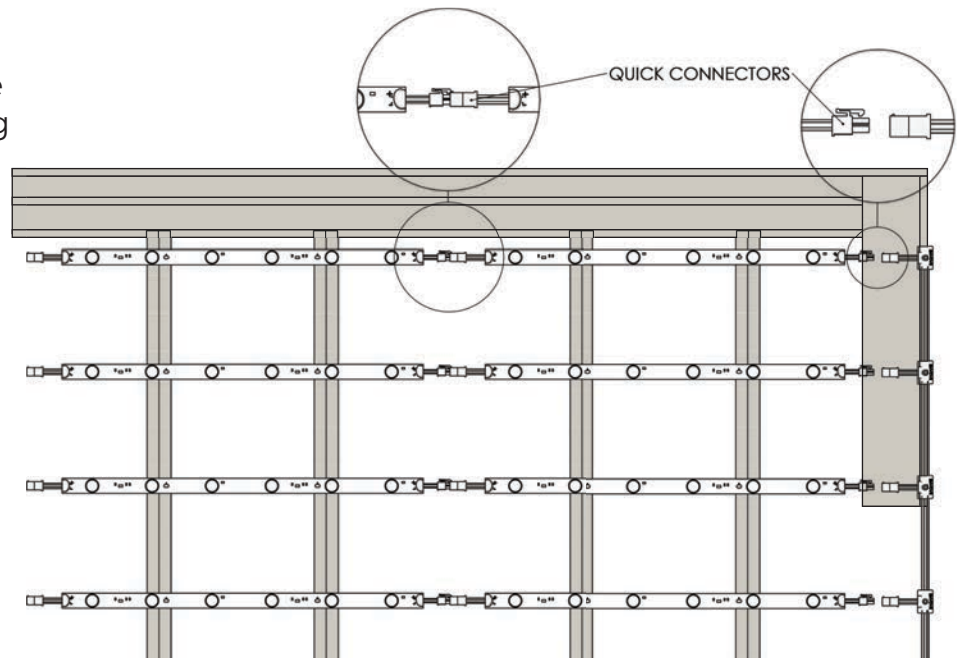
Align the center of the tracks with the arrow on the printed sticker applied to the profile.


STEP 5

Place each track on top of the frame. Use self tapping screws to affix each track to the frame. Fix tracks to intersecting crossbeams.


STEP 6

Place the cables behind the LED bars and connect using the quick connectors.





STEP 7 (if applicable)

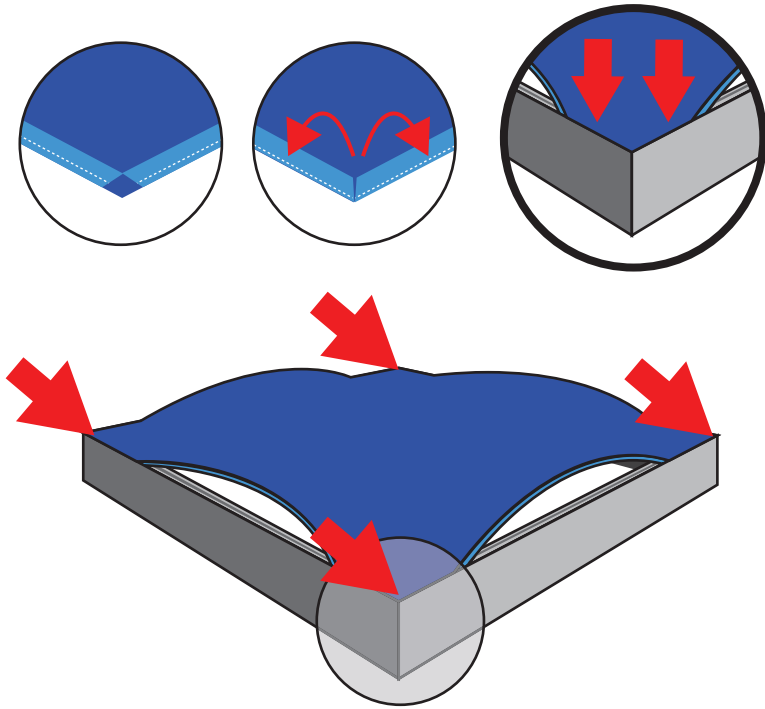
Insert the Flat Head Allen Bolt through the Flat Base and frame. Place a washer on the Allen Bolt, then secure by tightening the Wing Nut.





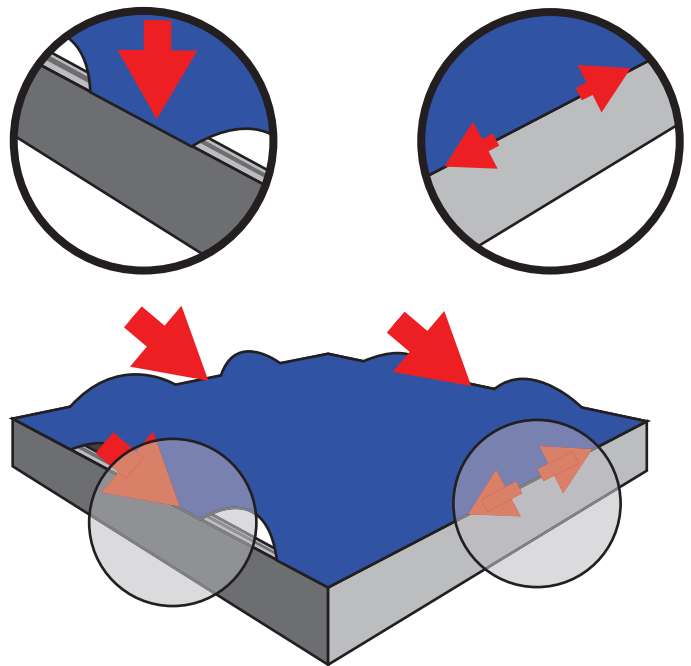
STEP 1

Begin by folding **Corner A** of the graphic, ensuring the silicone strip faces downward with the fabric wrapped over it. Carefully insert the silicone edge into the corresponding corner of the frame. Repeat for **Corner C**, then move to **Corner B**, followed by **Corner D** to complete the installation of all corners.



STEP 2

Insert the silicone strip at the mid-point of all four sides. Then, work outward from each mid-point toward the corresponding corners to complete the installation.



GRAPHIC REMOVAL

Locate the pull tab and gently pull up on the tab.

