



### BOM



Flat Pack Packaging



Allen Key 5mm X1



Locking System Corner Bracket X8



Flat Base (if applicable)



Washer (if applicable)



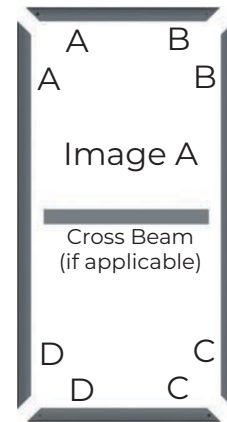
Flat Head Allen Bolt (if applicable)



Wing Nut (if applicable)

### STEP 1

Place the frame lengths flat on a clean surface, matching the corners as per **Image A**.



### STEP 2

Insert the Locking System Corner Bracket (2) in the first channel on each side of each corner of the frame as per **Image B**, **Image C** and **Image D**.

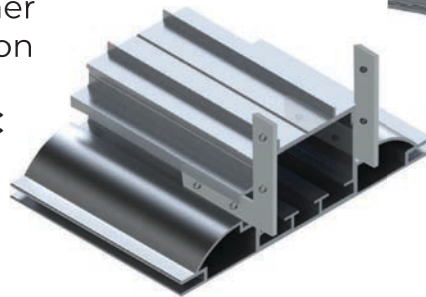


Image B



Image C

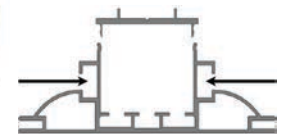


Image D

### STEP 3

Secure each corner in place by tightening the set screws for the locking system with the provided Allen key.

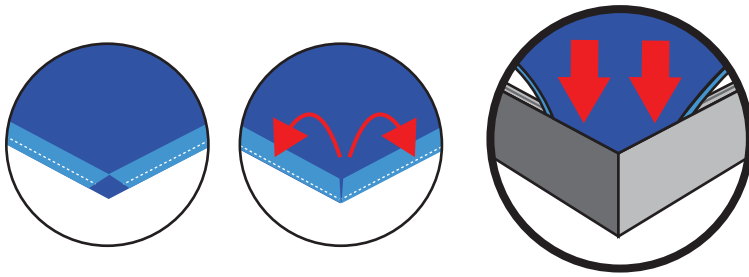




### STEP 4 (if applicable)

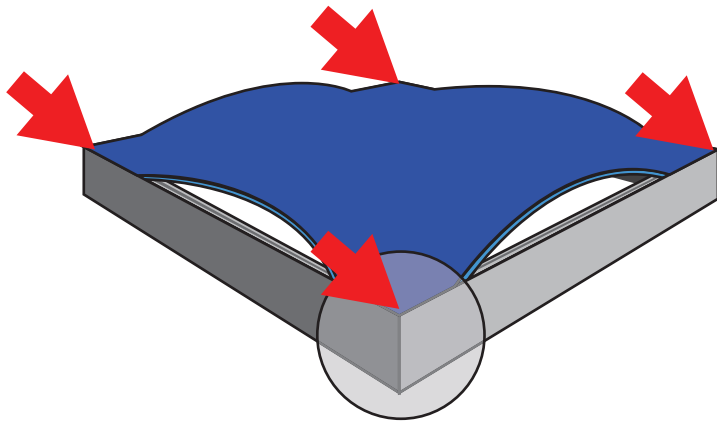
Insert the Flat Head Allen Bolt through the Flat Base and frame. Place a washer on the Allen Bolt, then secure by tightening the Wing Nut.





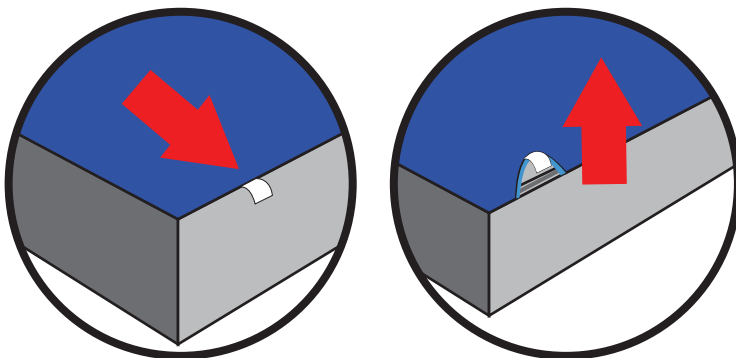
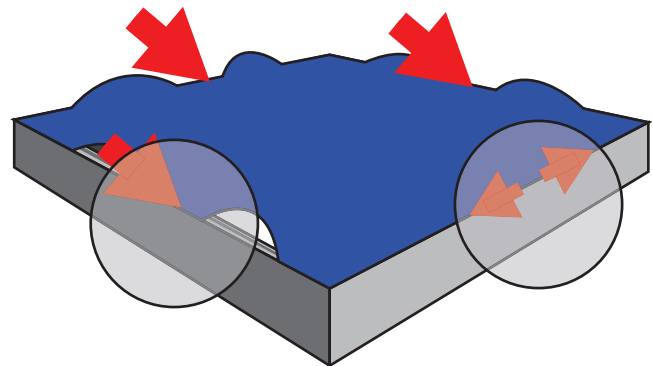
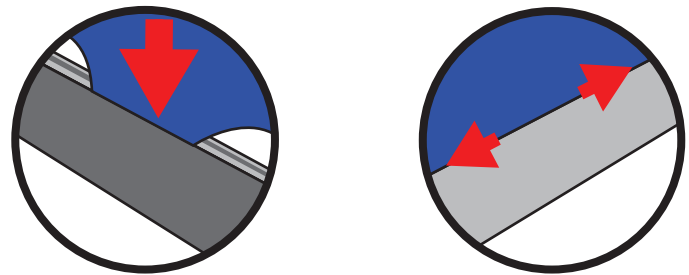
### STEP 1

Begin by folding **Corner A** of the graphic, ensuring the silicone strip faces downward with the fabric wrapped over it. Carefully insert the silicone edge into the corresponding corner of the frame. Repeat for **Corner C**, then move to **Corner B**, followed by **Corner D** to complete the installation of all corners.



### STEP 2

Insert the silicone strip at the mid-point of all four sides. Then, work outward from each mid-point toward the corresponding corners to complete the installation.



### GRAPHIC REMOVAL

Locate the pull tab and gently pull up on the tab.