

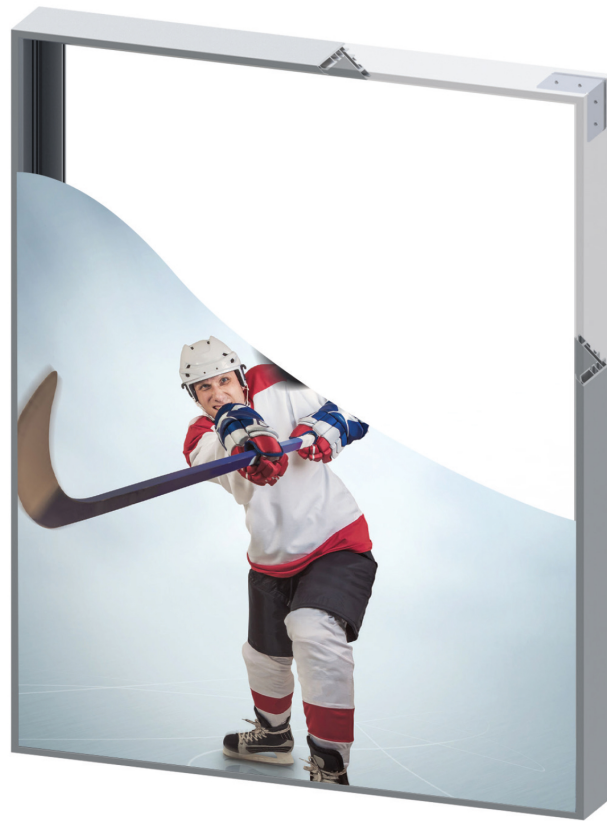
# SF 098

## OVERVIEW

The Reverse-Fit frame is designed to sit behind a window allowing the graphics to be visible from the exterior. This frame allows the banner must be inserted from the interior of the frame. In this design, the groove for the SEG banner is found on the interior of the frame creating a 1/2" border around the graphic. There is a second recessed groove on the reverse side of the frame which can be fitted with a second SEG banner or a Blackout SEG banner. The grooves allow for easy, tool-free installation.

## APPLICATIONS

This type of frame is used in retail window displays where the frame is not accessible from the front. The profile has a groove on the reverse side to install a second SEG banner.



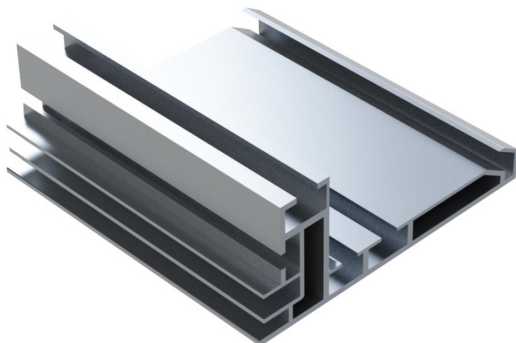
Anodized



White



Black

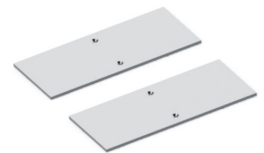


## WEIGHT

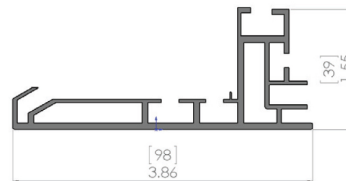
0.92 Lb/ft 1.37 kg/m



**ACCESSORIES**  
Mounting Bracket



**ACCESSORIES**  
Freestanding Base



**PROFILE DIMENSIONS**



**LOCK-SYSTEM**  
Angled L

# REVERSE-FIT DISPLAY SILICON EDGE GRAPHIC