

# SFD 090

## OVERVIEW

This profile was designed for use as a single-sided or double-sided frame depending on the desired application. It has a recessed groove around the perimeter allowing easy, tool-free installation and replacement of the SEG banner. The end result is an upscale frameless look that displays the graphic from edge to edge.

## APPLICATIONS

This frame is most often used in public spaces as statement pieces. Showrooms, airports, and retail stores are among the places in which this application has been used.



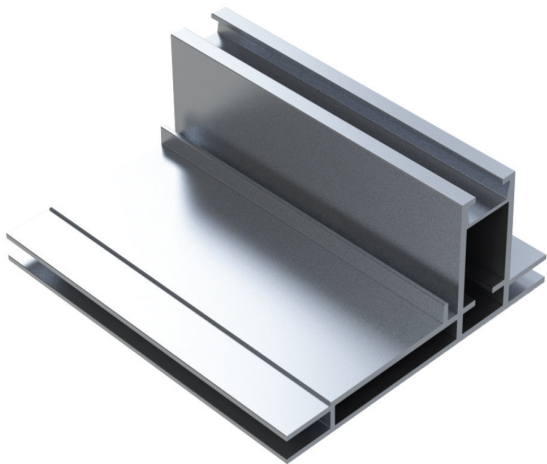
Anodized



White



Black



## WEIGHT

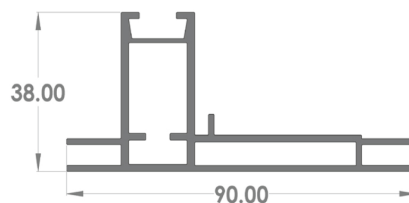
0.92 Lb/ft 1.37 kg/m



**ACCESORIES**  
Mounting Bracket



**ACCESORIES**  
Freestanding Base



**PROFILE DIMENSIONS**



**LOCK-SYSTEM**  
Tension-Lock

# SINGLE / DOUBLE-SIDED FRAME SILICON EDGE GRAPHIC